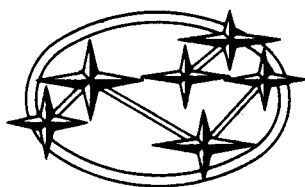


SUBARU
1988

	Page
COMPONENT PARTS	2
SERVICE PROCEDURE	4
Front Exhaust Pipe	4
Rear Exhaust Pipe	5
Muffler Assembly	6
Tail Pipe Cutter	7



COMPONENT PARTS

1800 cc model

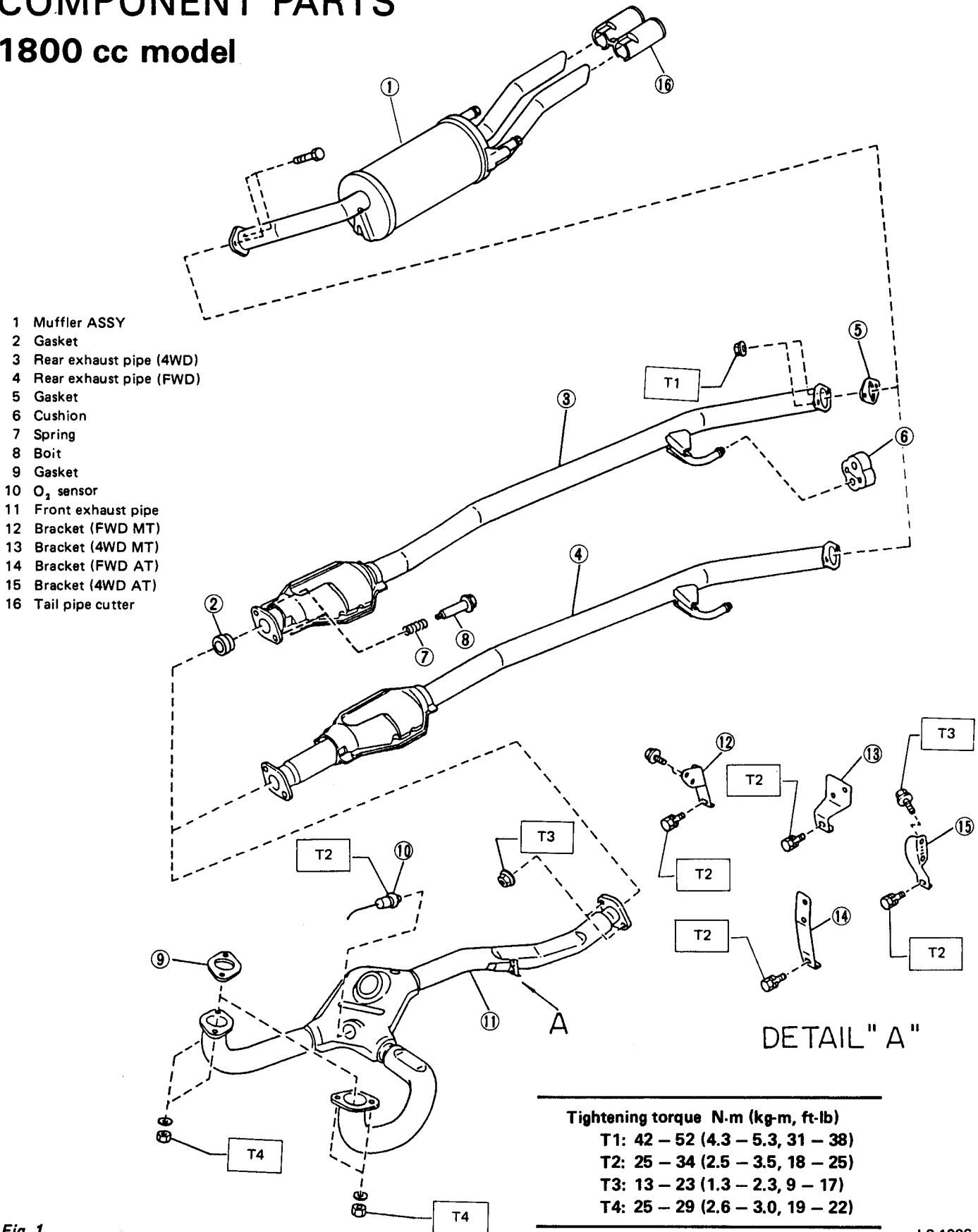


Fig. 1

L2-1006

2700 cc model

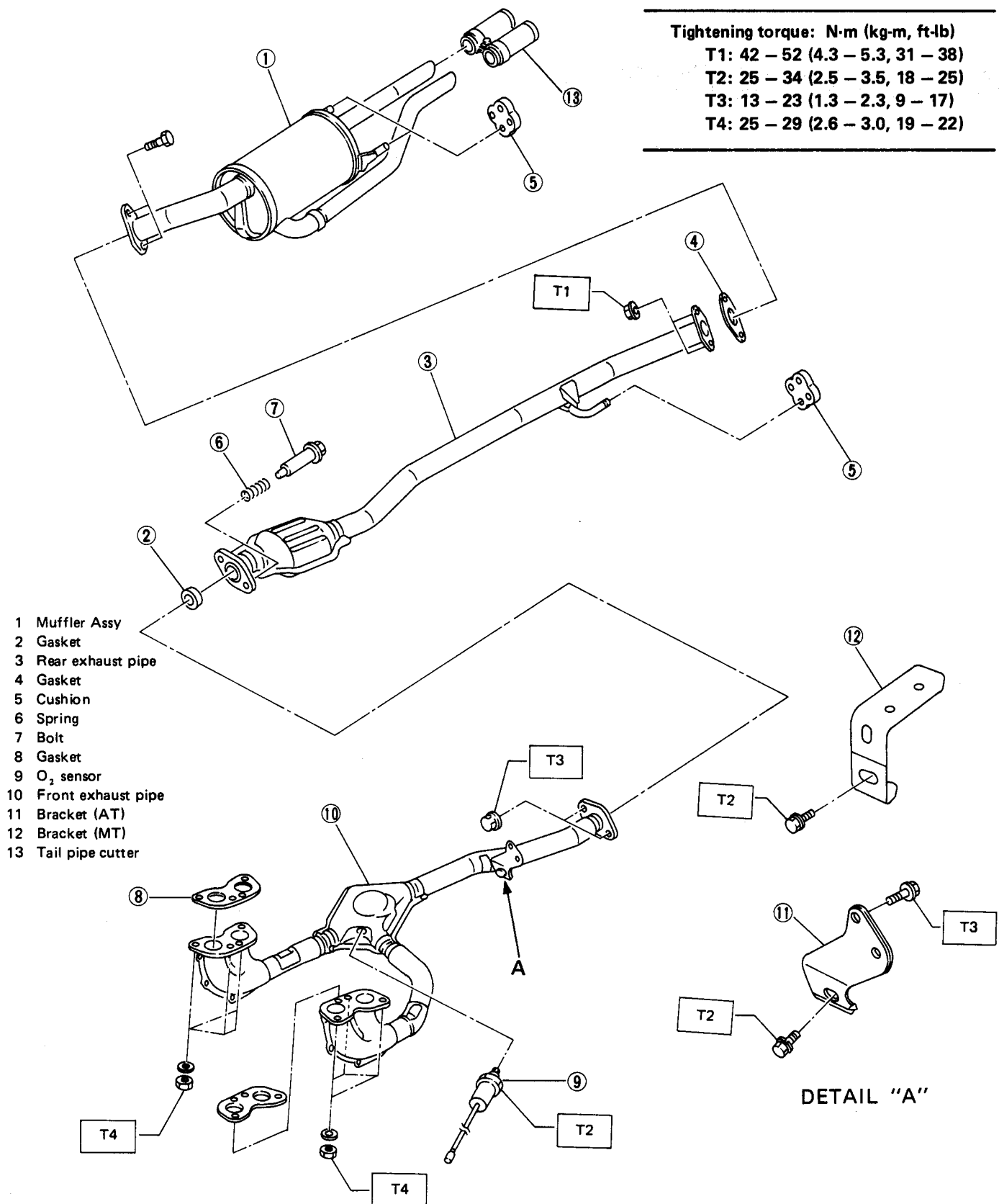


Fig. 2

L2-1234

SERVICE PROCEDURE

Front Exhaust Pipe

REMOVAL

- 1) Disconnect O₂ sensor harness.
- 2) Loosen (do not remove) nuts which hold front exhaust pipe to exhaust port of engine.
- 3) Disconnect front and rear exhaust pipes.
- 4) Disconnect front exhaust pipe and bracket.
- 5) While holding front exhaust pipe with one hand, remove nuts which hold front exhaust pipe to exhaust port. Front exhaust pipe can then be disconnected.

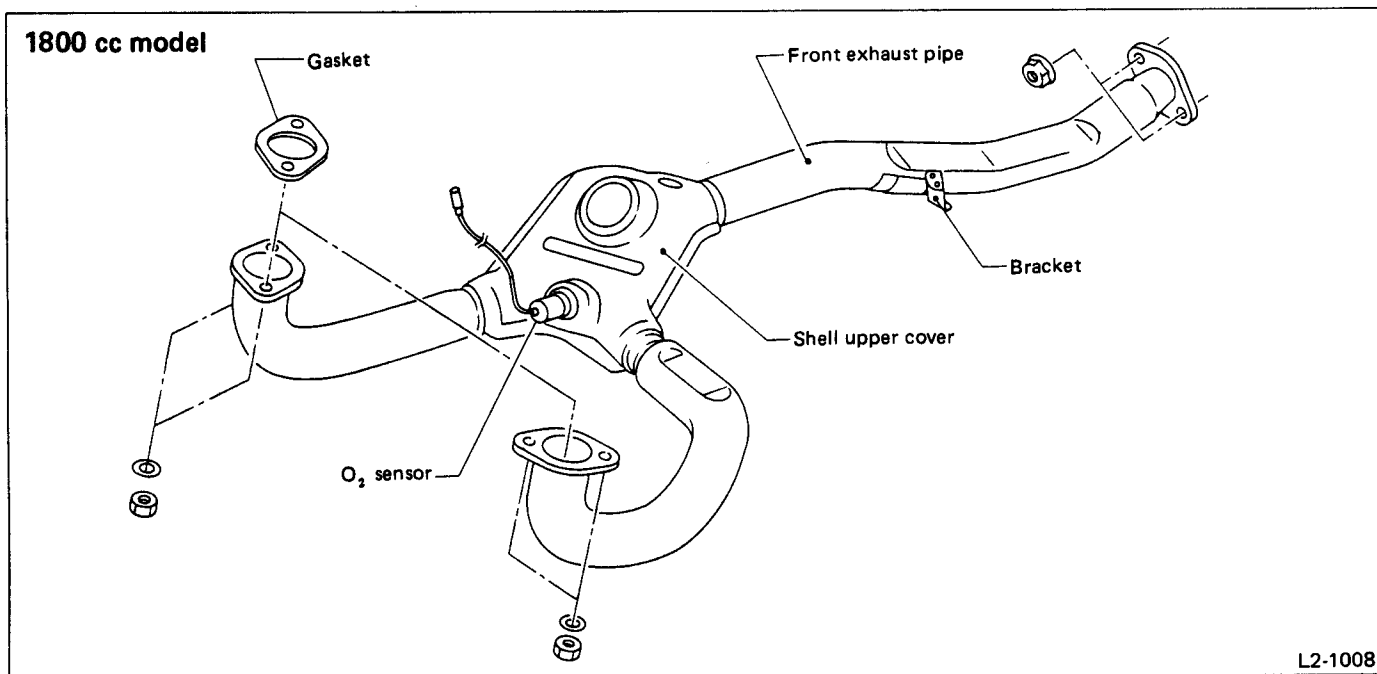


Fig. 3

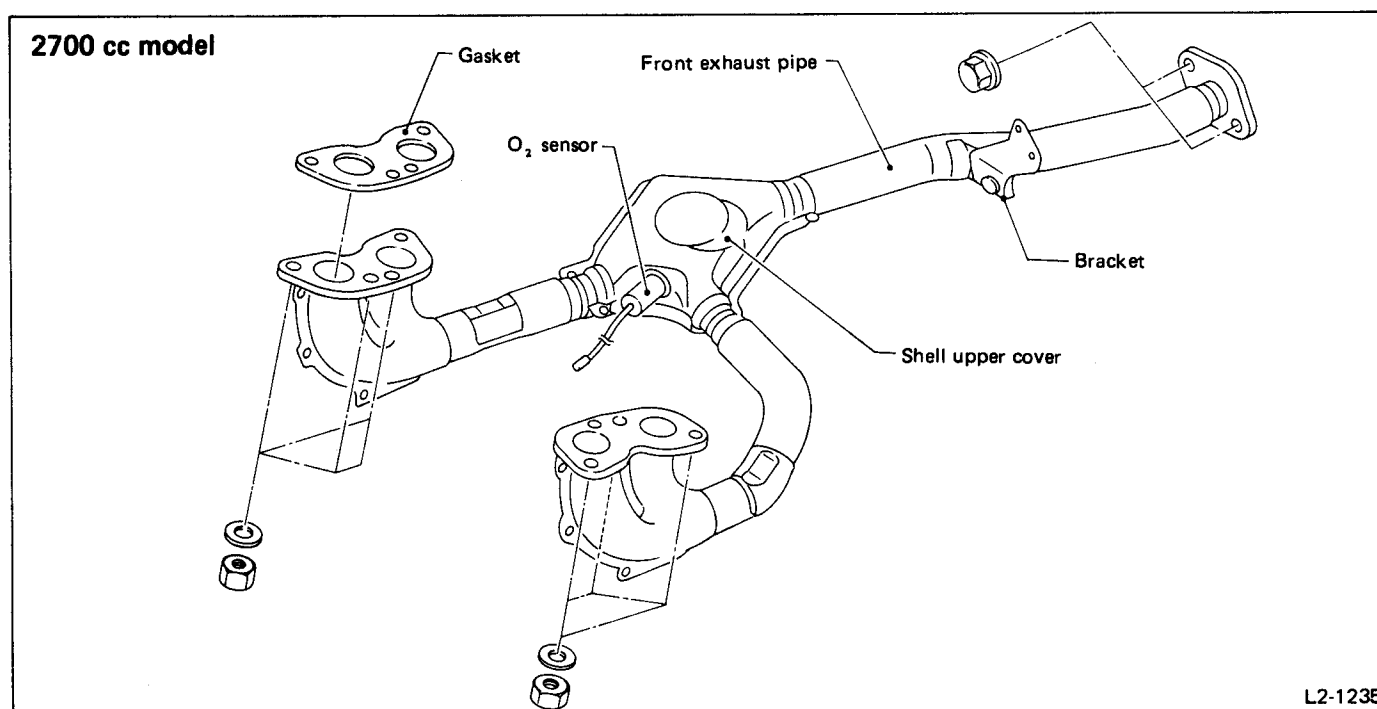


Fig. 4

INSTALLATION

Installation is in the reverse order of removal procedures. Observe the following:

- 1) Be sure to install a new gasket at exhaust port.
- 2) Use only nuts specified by the manufacturer.
- 3) Do not remove gasket placed between front and rear exhaust pipes. When front exhaust pipe needs to be replaced, gasket must be also replaced.

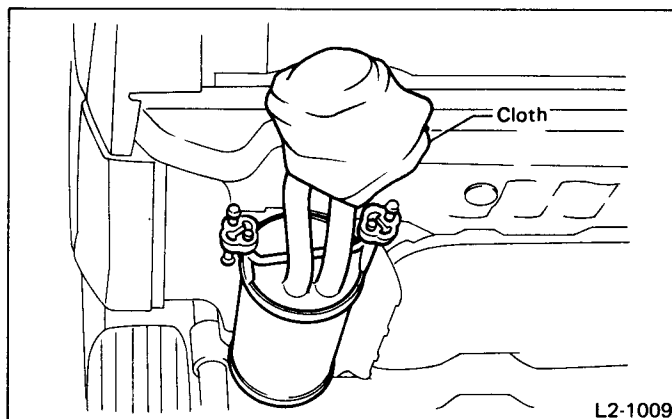


Fig. 6

- 3) Remove rear exhaust pipe from rubber cushion. To facilitate its removal, apply a coat of SUBARU CRC5-56 (004301003) to it in advance.

Rear Exhaust Pipe

REMOVAL

- 1) Disconnect rear exhaust pipe from front exhaust pipe.

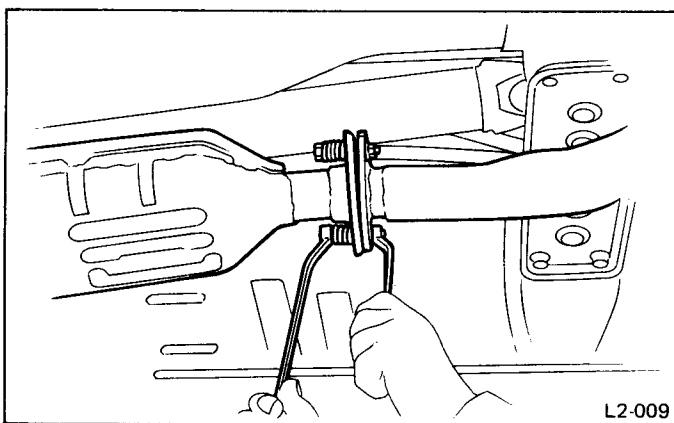


Fig. 5

- 2) Disconnect rear exhaust pipe from muffler ASSY. To prevent damaging bumper or rear skirt by muffler, wrap a cloth around tail pipe.

INSTALLATION

- 1) Temporarily connect rear exhaust pipe and muffler ASSY.
- 2) Temporarily connect rear exhaust pipe and front exhaust pipe.
- 3) Insert exhaust pipe bracket into rubber cushion. To facilitate insertion, apply a coat of SUBARU CRC5-56 (004301003) to the mating area of rubber cushion in advance.
- 4) Adjust clearances between temporarily installed parts and tighten to specified torque.

Be sure to install bolts, springs, and self-locking nuts in the order indicated in the figure. Always install new self-locking nuts.

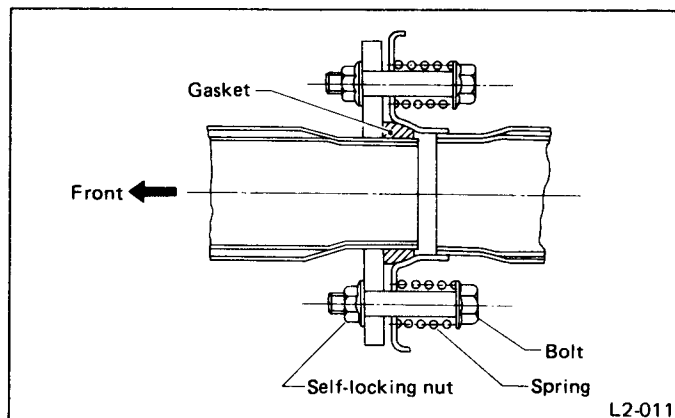


Fig. 7

Muffler Assembly

REMOVAL

- 1) Remove bolts and self-locking nuts which hold rear exhaust pipe to muffler ASSY to prevent damage to bumper or rear skirt by muffler wrap a cloth around tail pipe.
- 2) Remove left and right rubber cushions from muffler ASSY, and detach muffler ASSY.

INSTALLATION

Installation is in the reverse order of removal procedures.

Be sure to install new self-locking nuts and gaskets.

Exhaust System

ADJUSTMENT

- 1) After installing exhaust system parts, check to make sure clearances between parts and car body are larger than specified values.
- 2) If any clearance is not, loosen all connections.
- 3) Adjust where necessary to obtain proper clearance.
- 4) Tighten all connections to specified torque.

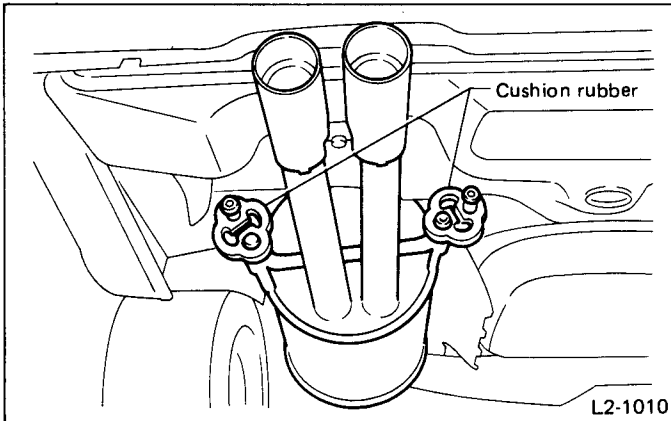
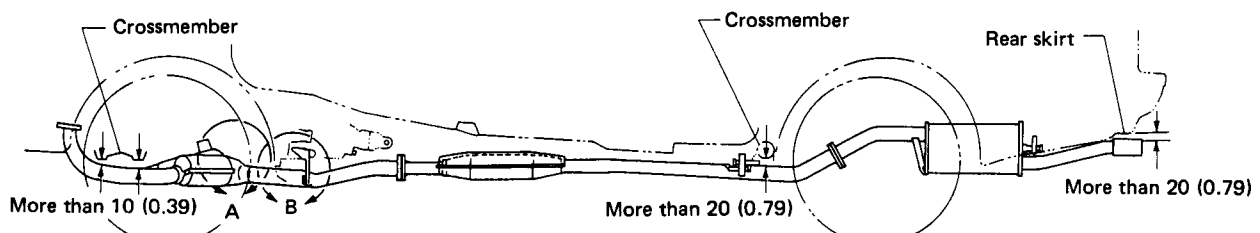


Fig. 8

1800 cc model

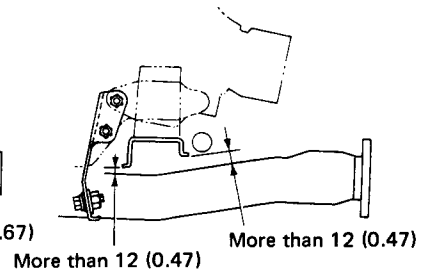
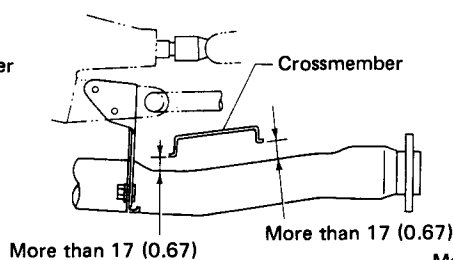
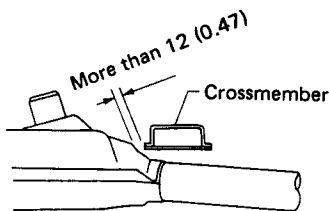
Unit: mm (in)



A ↺ [MT]

B ↺ [MT]

B ↺ [AT]



L2-1236

Fig. 9

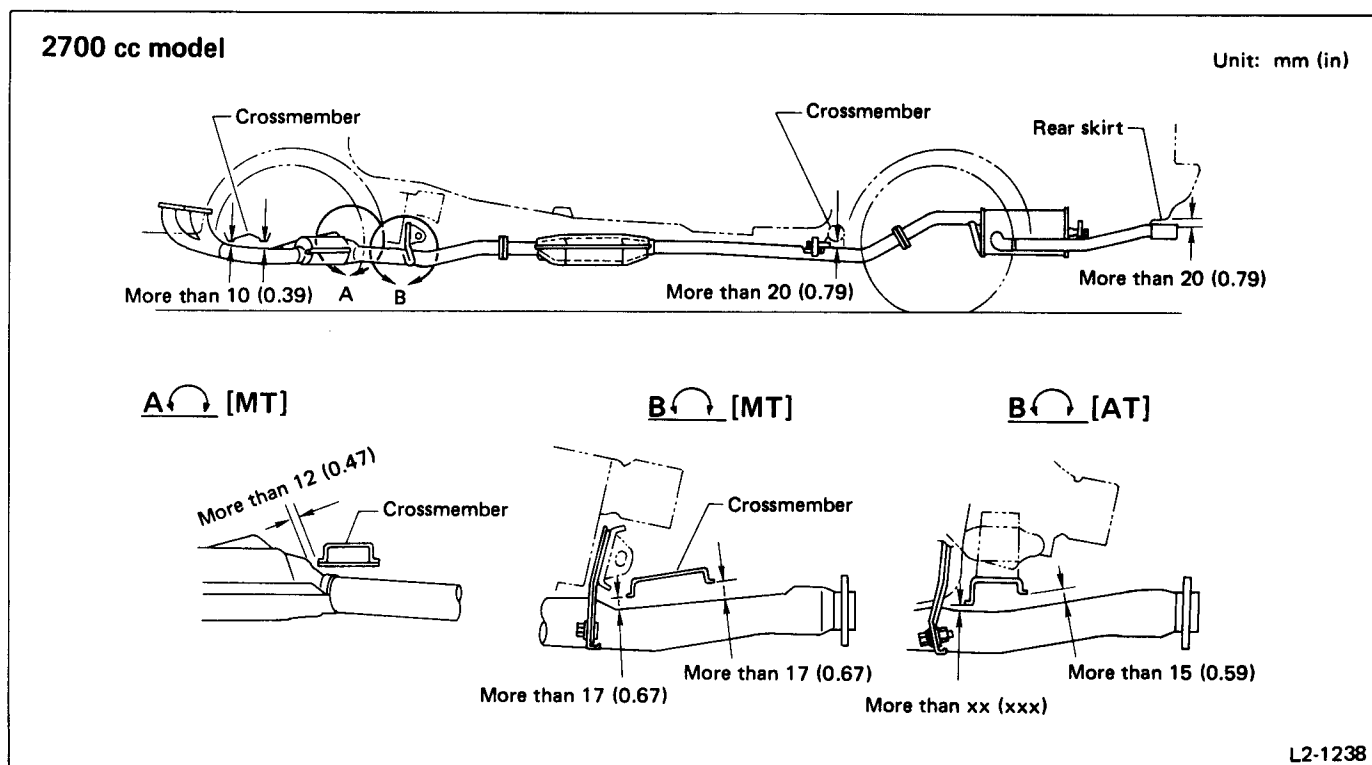


Fig. 10

Tail Pipe Cutter

REMOVAL

Loosen clamp bolt and remove tail pipe cutter from tail pipe.

- 2) Tighten clamp bolt to specified torque.

Tightening torque:

29 – 39 N·m (3.0 – 4.0 kg·m, 22 – 29 ft·lb)

INSTALLATION

- 1) Put tail pipe cutter onto tail pipe until it touches a projection.

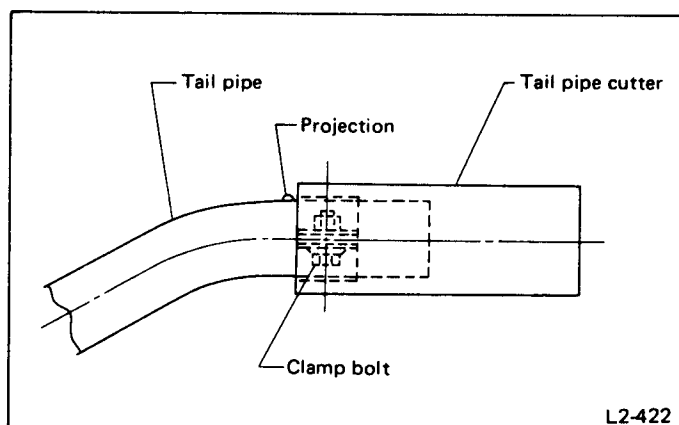


Fig. 11