



## STEP 2

SWITCH COMMAND TYPE TO “READ” AND TYPE IN 8010F005A80000027DAC AS PER THE TAB BELOW

Control Module Read/Write

COM Port:  Send Timeout: 55 ms ☒ ECU ☐ TCU

Command

Read  Address (eg. 020000): 00027D Read Length: 1 byte(s) ☐ Block Read Block Size: 128

8010F005A80000027DAC

Send Command

Trace

SEND COMMAND AND THE TRACE BELOW SHOULD RETURN

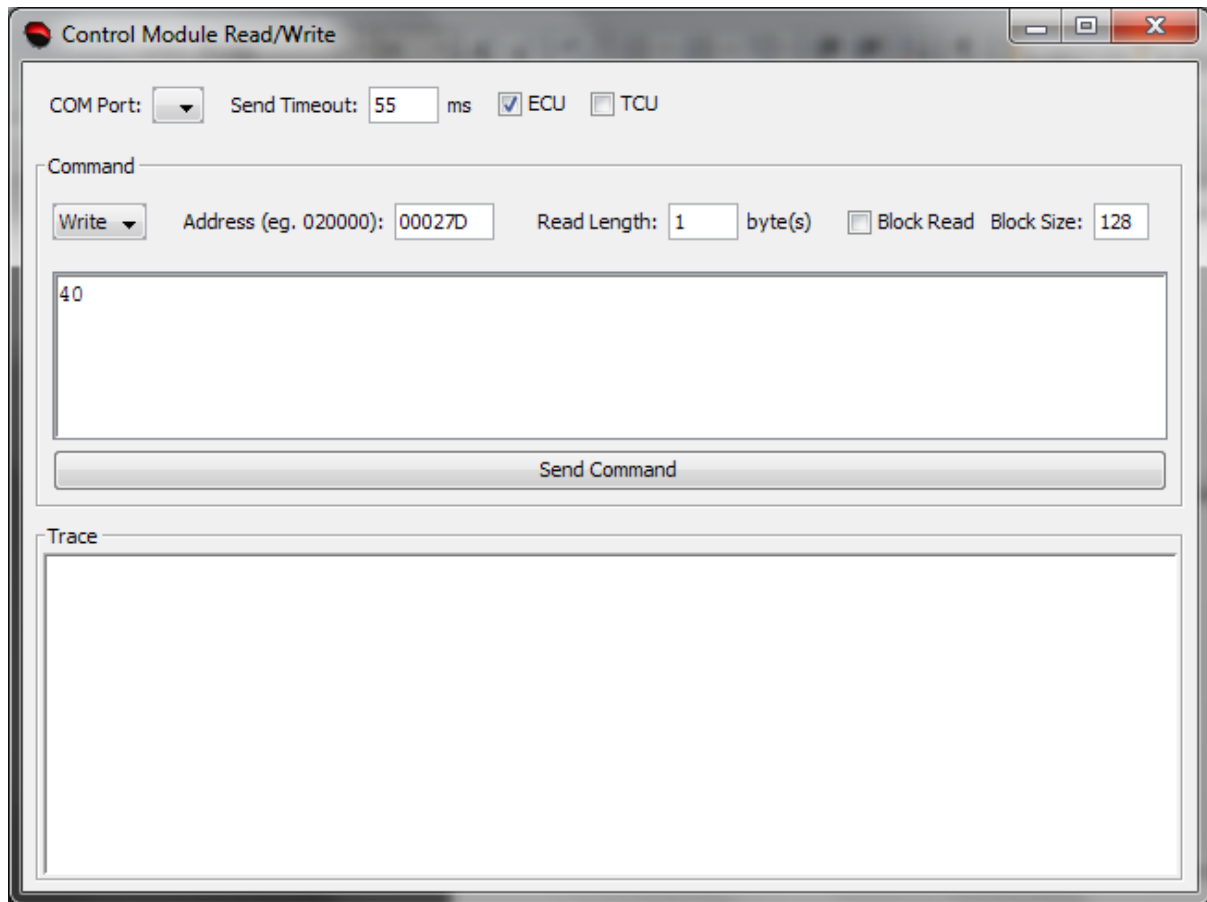
SND [Read]: 8010F005A80000027DAC

RCV [Read]: 80F01002E8006A

DATA [Raw]: 00

### STEP 3

SET COMMAND TYPE TO WRITE AND TYPE 40 AS PER THE TAB BELOW



SEND COMMAND AND THE TRACE BELOW SHOULD RETURN

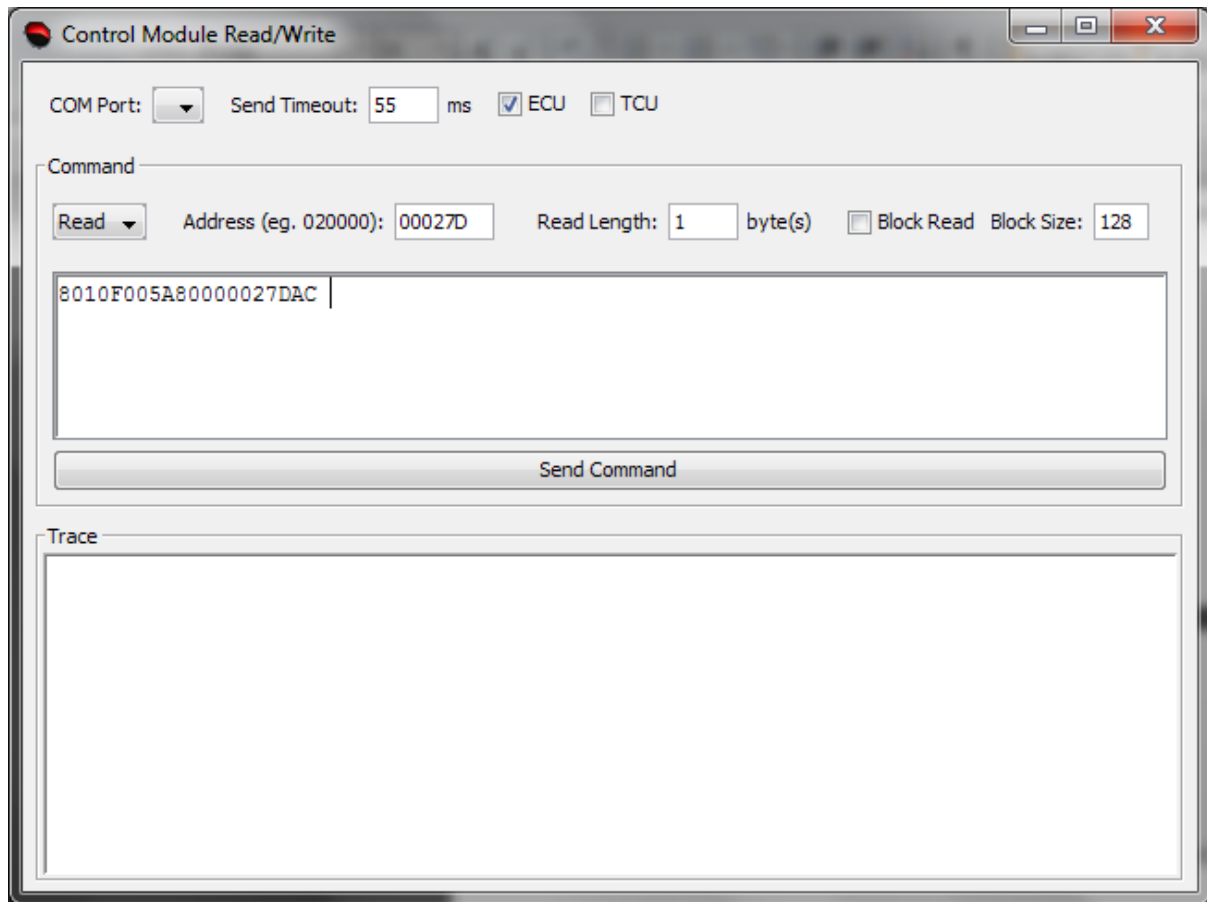
SND [Write]: 8010F005B800027D40FC

RCV [Write]: 80F01002F840BA

DATA [Raw]: 40

#### STEP 4

SET COMMAND TYPE TO READ AND TYPE 8010F005A80000027DAC AS PER THE TAB BELOW



SEND COMMAND AND THE TRACE BELOW SHOULD RETURN

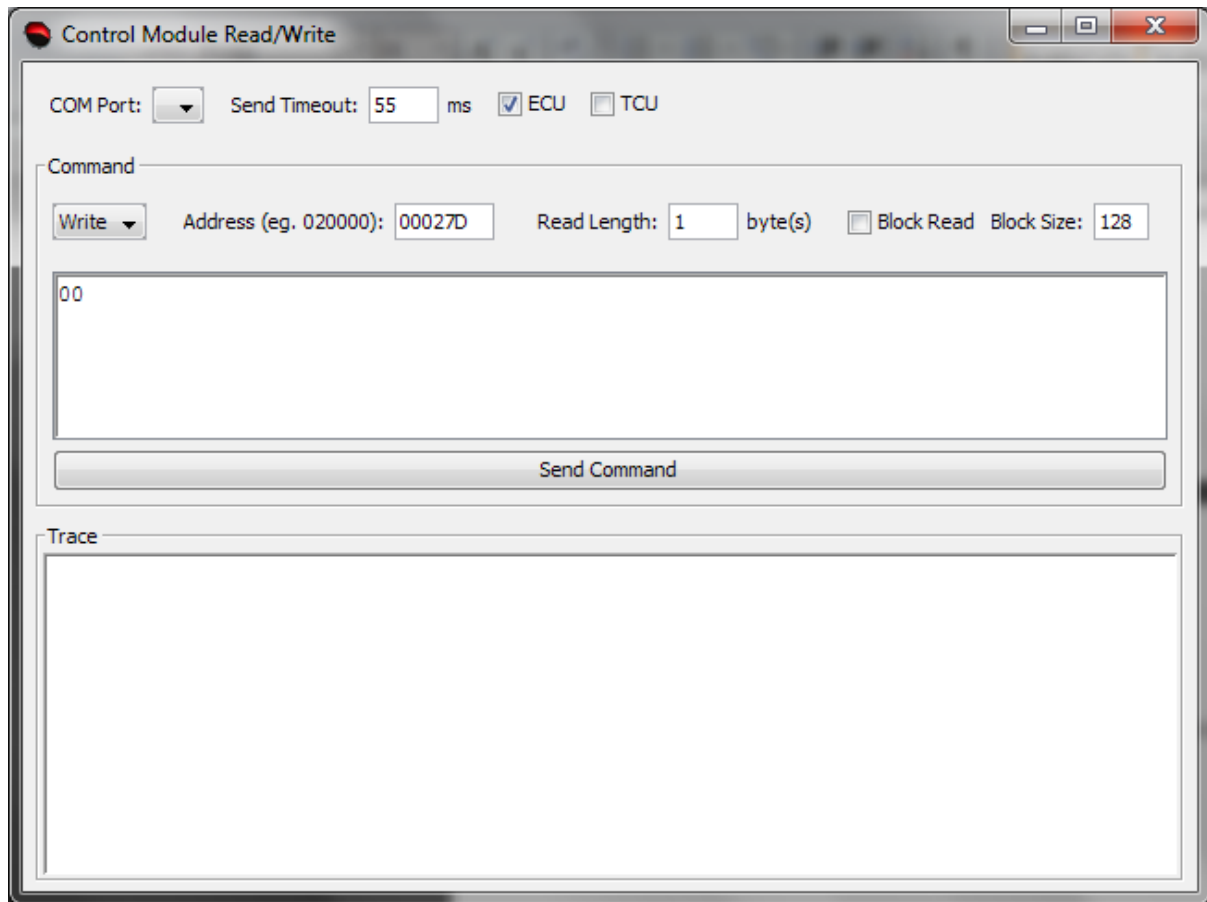
SND [Read]: 8010F005A80000027DAC

RCV [Read]: 80F01002E840AA

DATA [Raw]: 40

## STEP 5

SET COMMAND TYPE TO WRITE AND TYPE 00 AS PER THE TAB BELOW



SEND COMMAND AND THE TRACE BELOW SHOULD RETURN

SND [Write]: 8010F005B800027D00BC

RCV [Write]: 80F01002F8007A

DATA [Raw]: 00

## STEP 6

SET COMMAND TYPE TO READ AND TYPE 8010F005A80000027DAC AS PER THE TAB BELOW

Control Module Read/Write

COM Port:  Send Timeout: 55 ms ☒ ECU ☐ TCU

Command

Read  Address (eg. 020000): 00027D Read Length: 1 byte(s) ☐ Block Read Block Size: 128

8010F005A80000027DAC

Send Command

Trace

SEND COMMAND AND THE TRACE BELOW SHOULD RETURN

SND [Read]: 8010F005A80000027DAC

RCV [Read]: 80F01002E8006A

DATA [Raw]: 00

THEN SWITCH OFF IGNITION FOR AT LEAST 20 SECONDS AND THE CHECK OIL DILUTION AND ESTIMATED TIME TO OIL CHANGE WHICH SHOULD NOW BE 0% AND 15000KM RESPECTIVELY.